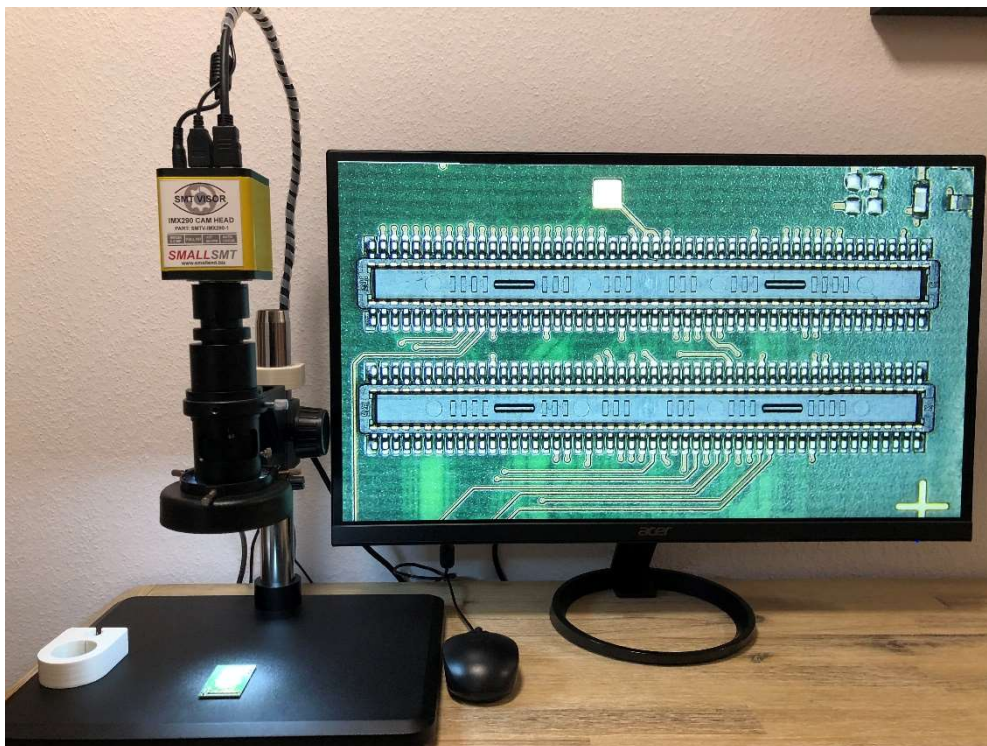


# SMALLSMT

Wenzhou SMALL Technology co. Ltd

SMTV-IMX290-1



PROFESSIONAL PICK AND PLACE MACHINE PROVIDER



V1.0  
14.09.2018

[www.smallsmt.biz](http://www.smallsmt.biz)

Company registration number: 91330381MA285PEJ8R, Address: 202 B,Nan Bingjiang Building, Xinfeng Village, Feiyun Town, Rui'an City, Wenzhou City, Zhejiang Province, China 365207

## Parts delivered

### Full working inspection system including:

Camera Head IMX290, Microscope zoom lens, Stand, Mouse, HDMI cable, Power supply

## Product parameter

|                           |  |
|---------------------------|--|
| <b>Model</b>              | SMTV-IMX290-1  |
| <b>Lens</b>               | 16X-160X Adjustable Magnification 25mm Zoom<br>C-mount Lens 0.7X~5X, working distance 110 - 170mm  |
| <b>Camera</b>             | IMX290 Sony 2.2MP, wide range automatic zoom<br>BSI high light sensitive sensor  |
| <b>Pixel Size</b>         | 1/2.8"   |
| <b>Lens mount</b>         | C / CS type  |
| <b>Exposure</b>           | automatic and manual   |
| <b>Display frame rate</b> | 60Hz at 1080P  |
| <b>Shutter Speed</b>      | 1/50s(1/60s) ~ 1/10000s  |
| <b>Software functions</b> | HDR mode, AWB / MWB, Color adjust<br>Save picture to micro SD<br>Save H264 Video to micro SD<br>Add Lines horizontal and vertical<br>Real Time Clock |
| <b>Machine dimensions</b> | 300x300x250mm  |
| <b>Machine weight</b>     | 5kg  |
| <b>Shipping weight</b>    | 8kg  |
| <b>Shipping size</b>      | 400x400x300mm  |
| <b>Power supply</b>       | AC 230V / 110V   |
| <b>Warranty</b>           | 12 Months parts exchange including shipping fee excluding<br>Customer need to exchange parts on machine.   |

For detailed pictures and videos please visit our website.